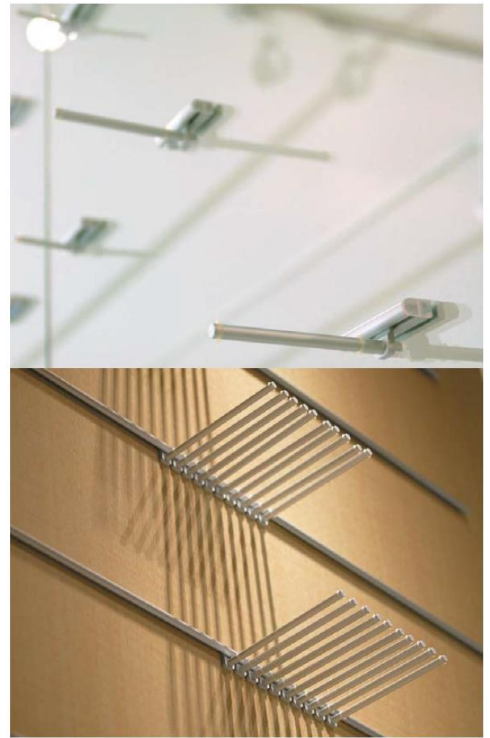


FLUQS-25 / ONE Wall Shelving System



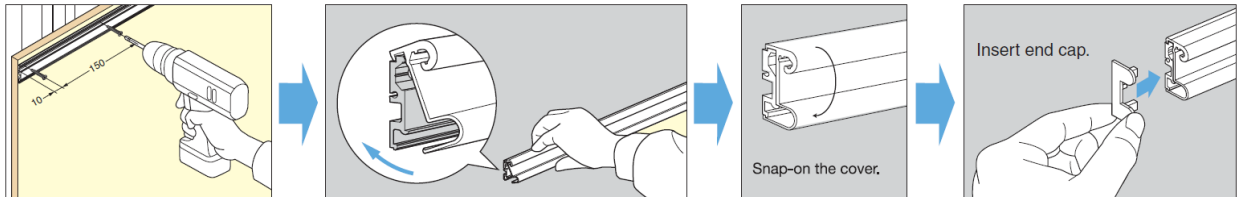
FLUQS 25



FLUQS ONE

FLUQS-25

Installation



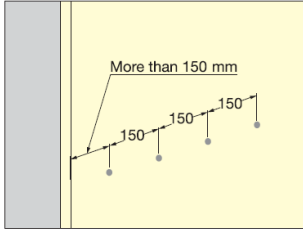
FLUQS-25 Part Details

No.	Part No.		Dimensions	Material/Finish	Length	Description
①	EX022-21	FLUQS 25		Aluminium / Anodized	1820 mm	<ul style="list-style-type: none"> ● Single Aluminium Profile. ● Easy installation type ● End Cap 2 pcs included. ● Screw hole pitch 150 mm
②	EX025-31	End Cap for FLUQS 25		ABS / Grey	—	<ul style="list-style-type: none"> ● Non-handed (2 pcs included).

FLUQS-ONE

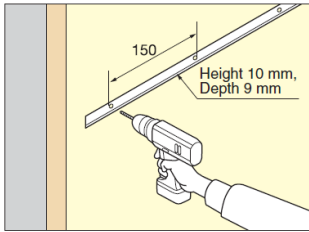
Installation

Surface Mount (Wood/Acrylic)

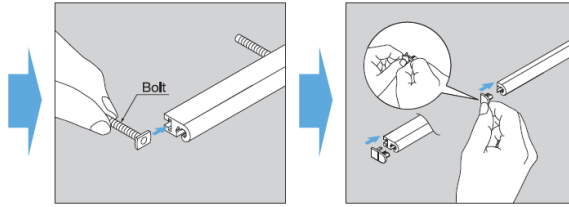


*Thickness:
Acrylic 10 mm, wood 20 mm
*Can not be used with hook.

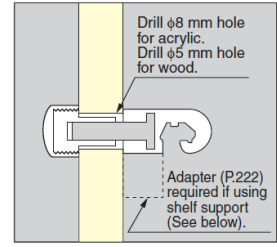
Recess Mount (Wood)



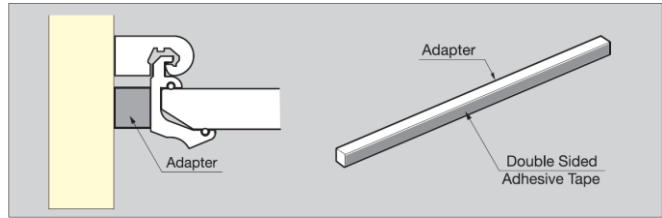
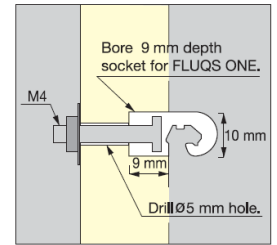
*Thickness:
Wood 24 mm



Surface Mount



Recess Mount



FLUQS-ONE Part Details

No.	Part No.		Dimensions	Material/Finish	Length	Description
①	EX012-21	FLUQS ONE		Aluminium / Anodized	50 mm	<ul style="list-style-type: none"> ● Single Aluminium Profile ● Simple and flexible layout design ● End Cap 2 pcs included ● For Recess Mount, cut the End Cap at the cut line and use the ※1 shape part.
	EX010-21				1820 mm	
②	EX018-45	End Cap for FLUQS ONE		Polypropylene / Plain	—	<ul style="list-style-type: none"> ● For Recess Mount, cut the End Cap at the cut line and use the ※2 shape part. (2 pcs included)
③	EX019-25	FLUQS ONE Screw Set for Wood		Steel / Chromate	—	<ul style="list-style-type: none"> ● Fastener to attach FLUQS ONE to Wood Panel (surface mount: Max. 20 mm / recessed mount: Max. 24 mm thick)
④	EX020-20	FLUQS ONE Screw Set for Acrylic Panel		Steel / Silver	—	<ul style="list-style-type: none"> ● Fastener to attach FLUQS ONE to Acrylic Panel (10 mm thick)

Accessories

Hook - For FLUQS-250/750/25/ONE Recess Mount

No.	Part No.		Dimensions	Material	Finish/Colour		Length	Load Capacity
①	EX030-20	Hook (φ3)		Steel	Chrome		15	1 kg
	EX031-20						30	
	EX032-20						55	
②	EX040-20	Hook (φ6)		Steel	Chrome		50	2 kg
	EX041-20						100	
	EX042-20						150	
③	EX046-20	Hook (φ9)		Steel	Chrome		100	3 kg
	EX047-20						150	
	EX048-20						200	

※ Can not be used with surface mount FLUQS-ONE

Shelf - For FLUQS-250/750/25/ONE

No.	Part No.		Dimensions	Material	Finish/Colour	W	D	t	Description		
①	EX201-41	Acrylic Shelf Set		Aluminium (Bracket)	Anodized (Bracket)	300	-	150	Load Capacity: 2.4 kg		
	EX202-41							200			
	EX203-41							250			
	EX206-41			Acrylic (Shelf)	Light Green (Shelf)	450	-	-	10	150	Load Capacity: 3.6 kg
	EX207-41									200	
	EX208-41									250	
	EX211-41			-	-	600	-	-	-	150	Load Capacity: 4.8 kg
	EX212-41									200	
	EX213-41									250	
②	EX204-41	Adapter		Acrylic	-	300	-	-	For Shelf Holder when used with FLUQS ONE surface mount profile and bracket. (with double sided adhesive tape)		
	EX209-41									450	
	EX214-41									600	
③	EX026-21	Shelf Holder		Aluminium	Anodized	1820	10	9	*For 10 mm glass *Maximum shelf depth: 250 mm *For permanent installation, apply caulk to bracket and glass/acrylic *1 rubber strip (clear, 1820 mm) included *Glass not included, chamfer required as shown Load Capacity: 14.4 kg		
④	EX027-21	Shelf Holder		Aluminium	Anodized	1820	-	-	*For 10 mm glass *Maximum shelf depth: 450 mm *For permanent installation, apply caulk to bracket and glass/acrylic *1 clear rubber strip (1820 mm) included *Glass not included, chamfer required as shown Load Capacity: 30 kg		
⑤	EX090-21	Mini Hook		Aluminium	Anodized	10	-	-	Load Capacity: 3 kg		

FLUQS Wall Shelving System



FLUQS

Exto Series

FLUQS is a unique wall shelving system with an artistic touch and a contemporary look

The word FLUQS is from Latin "flatus" for wave, FLUQS frees you to arrange shelves in any pattern or configuration, how and when you please. The aluminium profile system is easy to install and adjust and visually coordinates well with gleaming aluminium, white or black finishes.

Easily blends into any atmosphere

- Fixing screws are invisible after installation
- Shelves available in acrylic and aluminium plate
- 2 types available: FLUQS 250/750 which can be used as wall panels and FLUQS 25/ONE which has single hook base match with any wall design

Designed for safety and flexibility

- Easy installation - simply screw in place (base required)
- Accessories such as hooks and shelves fit firmly and stay put

